



GMT MONTHLY MEMBERSHIP PROGRESS REPORT

Results as of: 2/29/2020

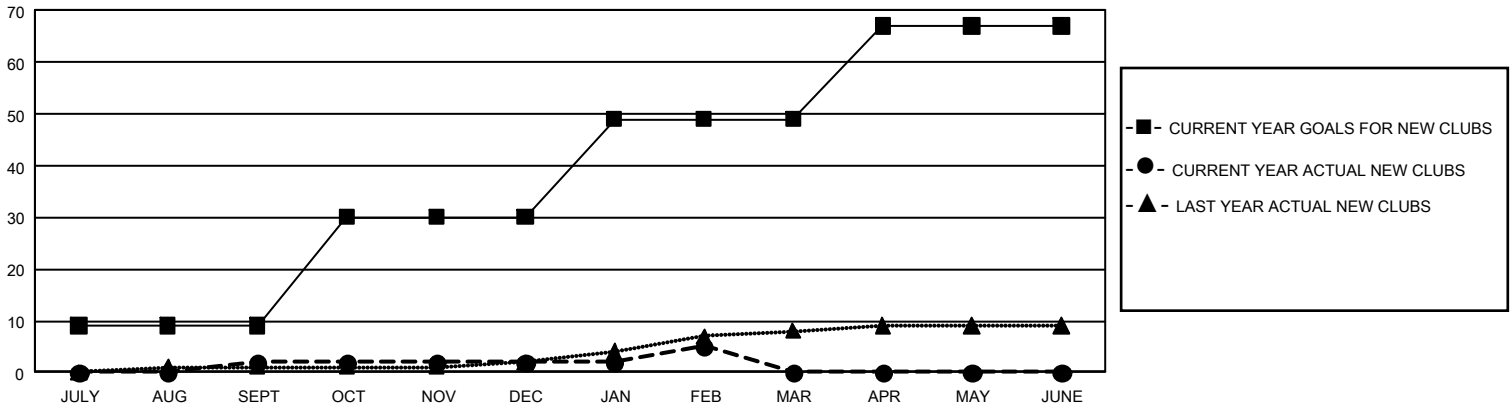
GAT Constitutional Area 5 - Japan

REPORT DOES NOT INCLUDE CLUBS IN UNDISTRICTED AREAS.

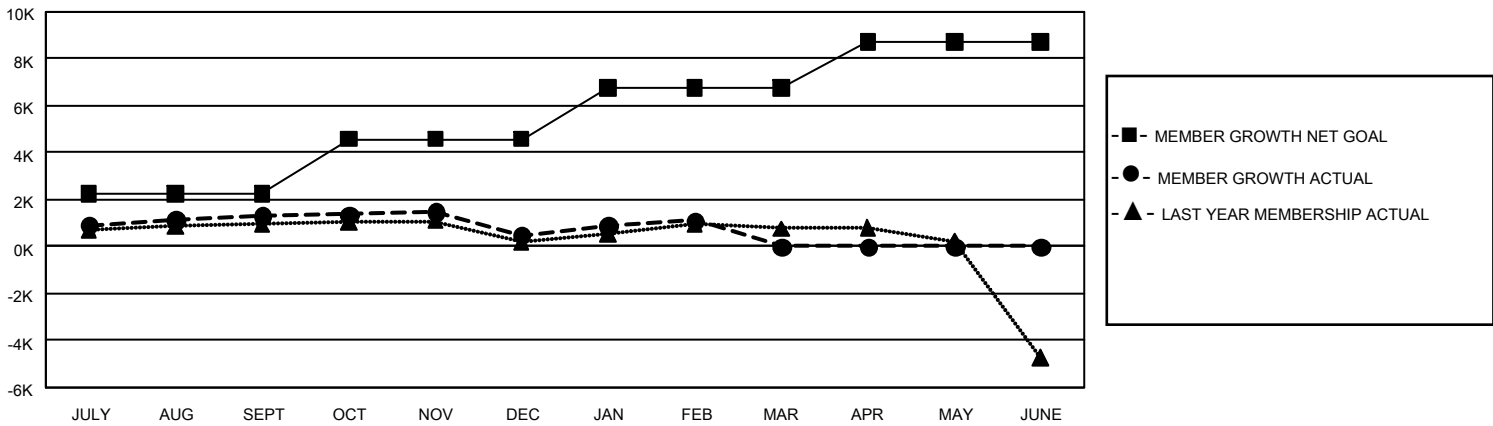
Clubs			
RESULTS FOR 2019-2020			
QUARTER	NEW CLUB GOAL	NEW CLUBS	DROPPED CLUBS
JULY/AUG/SEPT	27	2	6
OCT/NOV/DEC	63	0	5
JAN/FEB/MAR	57	3	5
APR/MAY/JUNE	54	0	0

Members			
RESULTS FOR 2019-2020			
QUARTER	MEMBER GROWTH NET GOAL	MEMBER GROWTH ACTUAL	DROPPED MEMBERS ACTUAL (including transfers)
JULY/AUG/SEPT	6,690	3,323	1,808
OCT/NOV/DEC	7,059	1,569	2,332
JAN/FEB/MAR	6,516	1,559	885
APR/MAY/JUNE	5,844	0	0

GOALS AND ACTUAL NEW CLUBS CUMULATIVE



GOALS AND ACTUAL MEMBERS CUMULATIVE



DROPPED CLUBS: 16	1,953 CLUBS OF 2,967 ADDED 1 OR MORE NEW MEMBERS	GENDER DISTRIBUTION
DROPPED MEMBERS		MALE 84,639 (75.70%)
DECEASED 587		FEMALE 27,169 (24.30%)
CLUB CANCELLED 98	CLICK HERE FOR CUMULATIVE MEMBERSHIP DATA	TOTAL FAMILY UNIT MEMBERS 41,668
OTHER 4,340		FAMILY MEMBERS PAYING HALF DUES 22,878
TOTAL 5,025		